

TPM-650 UNIT SPECIFICATIONS

Material Capacity	650 lbs. of material at specific gravity of 2.0 when filled 4" from the top (47 gallon total capacity)
Material Agitation	Full sweep dual blade agitator powered by a low speed, high torque, hydraulic motor
Material Temperature Control & Display	UL rated digital temperature control and material temperature indication with over temp. safety cut-off circuit
Heating System	Vapor withdrawal low pressure propane with impinged jet burner
Agitator Control Valve	Fully integrated 4 way / 3 position valve (forward, off, reverse) open center agitator control with integrated pressure relief
LPG Fuel Tank	100 lb. propane bottle holder (bottle not included)
Burner	140,000 BTU/hr. impinged jet-style burner, slides out for easy inspection and maintenance
Gas Control	Electronic ignition with flame sense safety circuit, digital readout temperature control, and digital over-temperature safety cut-off circuit
Hydraulic System	2 gallon per minute industrial hydraulic pump
Hydraulic Reservoir	5 gallon capacity with 10 micron spin on filter and side drain
Engine	9.5 hp Kohler propane fired engine, EPA and C.A.R.B. certified (50 state engine)
Construction	All steel welded construction with powder coated (or plated) exterior surfaces 100% made in USA
Tank Shape	Flat bottom tank for easy cleaning and color changes
Dimensions	49" W x 72" L x 72" H
Weight	1,200 lbs. (before material and fuel)



TOP-QUALITY PAVEMENT MARKING & PRESERVATION SOLUTIONS



Dispensing Technology Corporation manufactures an extensive line of Premelter Equipment for pavement marking. Dispensing Technology Corporation has been providing innovative equipment solutions for the pavement marking and pavement maintenance industries nationally and internationally for over 30 years. Simple, durable and accurate summarizes our design objective for our equipment. We remain committed to providing our customers with the same high standards of quality, service, and innovation on which we have built our reputation.



sales@dispensingtech.com (800) 529-7733 Toll Free
 5500 Adolfo Road (805) 388-5575 Office
 Camarillo, CA 93012 (805) 388-5560 FAX

DISPENSINGTECH.COM

TPM-650 Thermoplastic Premelter



Compact, powerful, and versatile, with a host of safety features designed with you and your operators in mind.



Welded tank and frame assembly is made in the USA, comprised of 100% steel for unsurpassed durability and integrity

Vent port with directional rain cap (in case of material flash)

Compact & lightweight (1,200 lbs. empty)

Fully insulated tank for rapid start-up and heat retention

Melts and holds up to 650 lbs. (usable weight)

Keep your focus on production and not on machine operation! Our versatile, heavy duty, compact **TPM-650 Premelter** is skid mounted and completely self contained – simply add fuel and material and you are ready to go.

STANDARD & OPTIONAL EQUIPMENT

TPM-650 units come standard with:

- Hydraulic reservoir
- Filter
- Pump
- Four way hydraulic valve
- Anti-splash fill port (for operator safety)
- Lid-mounted vent port (in case of material flash)

OPTIONAL EQUIPMENT & ACCESSORIES

- 800-lb and 1,200-lb (usable weight) versions in both single and dual tank models are available
- Various transportation and mounting configurations to meet your needs

Fully integrated knife valve for safety and durability (no auxiliary heating torch required to dispense material)

Fills an applicator in minutes

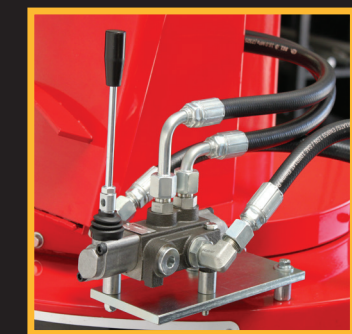
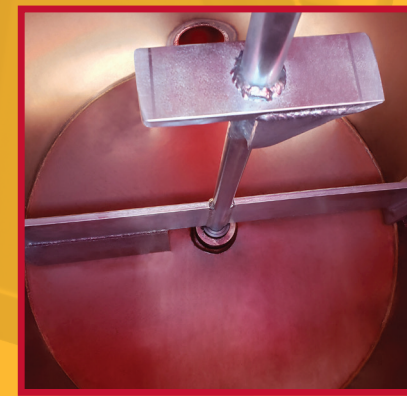


Electric start engine with back-up pull start

Powerful 9.5 hp Kohler engine certified for and meets both EPA & C.A.R.B. regulations



Fills an applicator in minutes



SUPERIOR SAFETY

Our **TPM-650 Thermoplastic Premelter** has been designed with you and your crews in mind:

- The unit utilizes durable thermocouple heat sensors (no capillaries).
- The engine is equipped with an oil alert system that stops the engine if the oil level drops too low.
- UL rated over-temperature digital safety system. The temperature control box has a digital electronic thermostat for precise temperature control that features an over temperature safety switch and a redundant propane valve that activates if the material exceeds the safety switch setpoint.
- Anti-splash wings on the dispensing chute provide extra safety for the operator when dispensing material from the tank to the applicator.
- Durable welded steel tank design.

The small, yet powerful, 9.5 hp Kohler engine drives a hydraulic pump to turn the lid mounted, full sweep agitator. The four way valve allows the operator to activate the agitator clockwise or counter-clockwise (as desired) to provide homogenous heating and aid in a faster melt rate.

